

Seal-Fast™

Enclosure & Door Seals

High Performance Edge Seal Solutions



A better, cleaner, and faster way to protect your equipment from environmental conditions; dust, low and high temperatures, and moisture.

The Seal-Fast D Series Edge Seal is available in a variety of materials, which include a flexible steel or stainless steel substrate, Silicone, EPDM, or PVC gasket and seal assembly allowing for fast and easy assembly.



Features and Benefits:

- Excellent grip strength
- Excellent resistance to abrasion, water absorption, and low and high temperatures
- Indoor or outdoor use
- Fast assembly without the use of adhesives, rivets, or screws
- Multi-axis flexibility for small inside and outside radius corners

Applications:

- Automotive
- Railway
- Aerospace
- Food service (FDA white)
- Telecommunication
- Construction, mining, and forestry
- General industrial



“D” Silicone Series

- FDA approved (White Silicone Material)
- ASTM E 662 (Toxicity)
- ASTM C 542 & ASTM C 1166 (Flame Propagation)

“D” EPDM Series

- FMVSS 302 (Flammability of Interior Materials)
- SAE J1885 (Interior Weatherometer)
- SAE J1960 (Exterior Weatherometer)
- SAE 200 M8BA 708 B13 21-6 (Low Temperature Flexibility)

“D” PVC/EPDM Series

- Greater flexibility for small corner radii
- Smaller profile



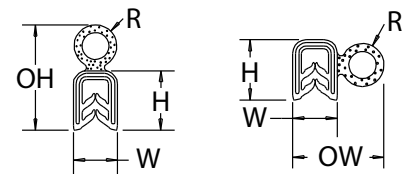
www.devicetech.com

The information contained in this data sheet is based on our experience to date and is believed to be reliable. It is intended as a guide for use by persons having technical skill at their discretion and risk. We do not guarantee favorable results or assume any liability in connection with its use. Dimensions contained herein are for reference purposes only. For specific dimensional requirements, consult the factory. This publication is not to be taken as license to operate under, or a recommendation to infringe upon any existing patents. This supersedes and voids all previous literature, etc. Device Technologies, Inc. expressly disclaims any and all express or implied warranties concerning its products including without limitation, warranty of fitness for a particular purpose and warranty of merchantability.

Seal-Fast™ Enclosure and Door Seal Qualifications

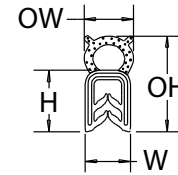
Seal-Fast™ Seal Product Configurations		PVC/EPDM	EPDM	Silicone		
Substrate (Base Material)		Steel Clip	Steel Wire (Optional: Stainless Steel Wire)	Stainless Steel		
Gasket Material	Type	PVC	EPDM	Silicone	FDA Approved Silicone	
	Durometer	Shore A 65	Shore A 70 (Optional: 50 and 90)	Shore A 90 (Optional: 45 and 60)		
	Color	Black	Black	Black	White	
Seal Material (Top or Side Bulb)	Type	EPDM	EPDM	Silicone	FDA Approved Silicone	
	Durometer	Shore A 65	Sponge Rubber (EPDM)	Shore A 70 (Optional: 45 and 60)	Shore A 60	
	Color	Black	Black	Black	White	
Operating Temperature Range		Up to 212°F (100°C)	-40°F to 350°F (-40°C to 177°C)	-50°F to 450°F (-45°C to 232°C)		
Interior Weatherometer			SAE J1885			
Exterior Weatherometer			SAE J1960			
Low Temperature Flexibility			SAE J200 M8BA 708 B13 Z1-6			
Flame Propagation - Rail & Aero				ASTM C 542, ASTM C1166		
Flammability of Interior Materials (Burn Resistance) - Automotive			FMVSS 302			
Toxicity - Rail & Aero				BSS 7239, ATS 100/ABD0031 ASTM E 662 & METHOD D 2036-91		
Food Service Equipment				FDA Approved White		
Fabrications Options		Factory pre-cut lengths, bulk, or private branded kits				
RoHS Compliant		YES	YES	YES		

Seal-Fast™ Standard Profiles

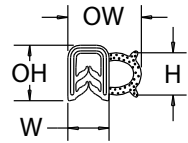


Profile A

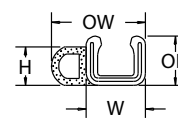
Profile B



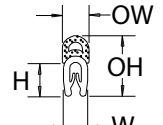
Profile C



Profile D



Profile E



Profile F

DTi Part #	Substrate Material	Gasket Material	Seal Material	Seal Config.	Profile	Grommet Width (inches)	Grommet Height (inches)	Overall Width (inches)	Overall Height (inches)	Seal Radius (inches)	Seal Width (inches)	Application Thickness (inches)
D3-001-S011	Steel	EPDM	EPDM	Top	A	0.394	0.532	0.394	0.942	0.19	0.38	0.040-0.125
D3-002-S011	Steel	EPDM	EPDM	Top	A	0.394	0.532	0.59	1.162	0.295	0.59	0.040-0.125
D3-003-S011	Steel	EPDM	EPDM	Top	A	0.394	0.532	0.72	1.292	0.36	0.72	0.040-0.125
D1-020-T0T4	Stainless	Stainless	Silicone	Side	B	0.18	0.48	0.55	0.48	0.185	0.37	0.062 Nom
D3-004-S011	Steel	EPDM	EPDM	Side	B	0.394	0.532	0.806	0.532	0.19	0.38	0.040-0.125
D3-005-S011	Steel	EPDM	EPDM	Side	B	0.394	0.532	1.058	0.623	0.312	0.623	0.040-0.125
D4-033-T244	Stainless	Silicone White	Silicone White	Side	B	0.394	0.532	0.92	0.523	0.28	0.525	0.187 Nom.
D3-009-S011	Steel	EPDM	EPDM	Top	C	0.394	0.532	0.430	0.830	0.215	0.430	0.040-0.125
D3-028-S044	Steel	Silicone	Silicone	Top	C	0.394	0.532	0.55	1.06	0.25	0.5	0.040-0.125
D3-029-T011	Stainless	EPDM	EPDM	Top	C	0.394	0.532	0.43	0.83	0.215	1.43	0.040-0.125
D3-031-S044	Steel	Silicone	Silicone	Top	C	0.394	0.532	0.424	0.847	0.212	0.424	0.040-0.125
D3-010-S011	Steel	EPDM	EPDM	Side	D	0.394	0.532	0.701	0.532	--	0.307	0.040-0.125
D3-023-S011	Steel	EPDM	EPDM	Side	E	0.378	0.532	0.64	0.532	--	0.262	0.040-0.125
D8-012-S011	Steel	EPDM	EPDM	Side	E	0.732	0.608	1.161	0.608	--	0.429	0.500 Nom
D9-027-S011	Steel	EPDM	EPDM	Side	E	0.926	0.607	1.324	0.607	--	0.398	0.531-0.625
D2-016-S021	Steel	Flexible PVC	EPDM	Top	F	0.256	0.311	0.256	0.571	--	0.256	0.029-0.082
D3-015-S021	Steel	Flexible PVC	EPDM	Top	F	0.433	0.484	0.433	0.846	--	0.433	0.040-0.125

Additional and custom sizes & profiles available, please consult factory or representative for details or evaluation samples

I.S. EN ISO 9001:2008 • AS9100-B/ISO 9001:2008 Certified. Registration No. AS19.4480

Certified Vendor to Fortune 100 & 500 OEMs, JIT w/ MAJOR OEMs Worldwide, supported by International Distribution



www.devicetech.com

USA Toll Free: +1-800-669-9682

Phone: +1-508-229-2000 x 130

Fax: +1-508-229-2622

Email: customerservice@devicetech.com



The information contained in this data sheet is based on our experience to date and is believed to be reliable. It is intended as a guide for use by persons having technical skill at their discretion and risk. We do not guarantee favorable results or assume any liability in connection with its use. Dimensions contained herein are for reference purposes only. For specific dimensional requirements, consult the factory. This publication is not to be taken as license to operate under, or a recommendation to infringe upon any existing patents. This supersedes and voids all previous literature, etc. Device Technologies, Inc. expressly disclaims any and all express or implied warranties concerning its products including without limitation, warranty of fitness for a particular purpose and warranty of merchantability.